



Complete drive-through wheel and underbody wash

Rugged steel construction

Fully automated

Portable





The Warrior Wheel and Underbody Truck Wash has been designed to provide a convenient, efficient and fully automated drive through wash for heavy vehicles. The Warrior Wheel and Underbody Truck Wash is always customised to site requirements. Some features are however standard to all installations.

Standard Features

- Fully automatic, ultra efficient wheel and underbody wash
- 4 meter wash length
- 84 high pressure jets arranged to give intensive spray pattern to wash all tyre and underbody surfaces
- Automated drive through system triggered by an electronic sensor
- Caters for all types of road going vehicles
- Side screens to contain overspray
- Adjustable side spray bars

Optional Features

- Available with complete water recycling and filtration
- Basic design easily adapted to suit particular site requirements
- Available for over dimension and over weight loads
- Optional pump configurations
- Entry and exit rams

Optional Add-ons

Ramps

- Specifically designed to complement the main Warrior Wheel and Underbody Truck Wash
- Entry ramps help loosen caked on mud from between the wheels and underside of the chassis
- Exit rams encourage water to rain off by gently vibrating the vehicle as it exits the wheel wash
- Ramps also allow the wheel wash to be positioned on existing sealed roads without the need to excavate

Lease

- Rocktec can also offer lease packages, complete with containerised header tank, control system and generator if required.

Standard Specifications

Superior spray patterns:

- 84 carefully directed brass nozzles
- 1285 litres per minute of water
- 5-bar pressure
- Intensive washing of all surfaces of the wheels and underbody

Pumping system:

- Horizontal end suction centrifugal supplied complete as standard
- 15kW, 2-pole, 2850rpm, TEFC-IP55 weatherproof, 415-Volt/3 phase/50-Hz electric motor

Control System:

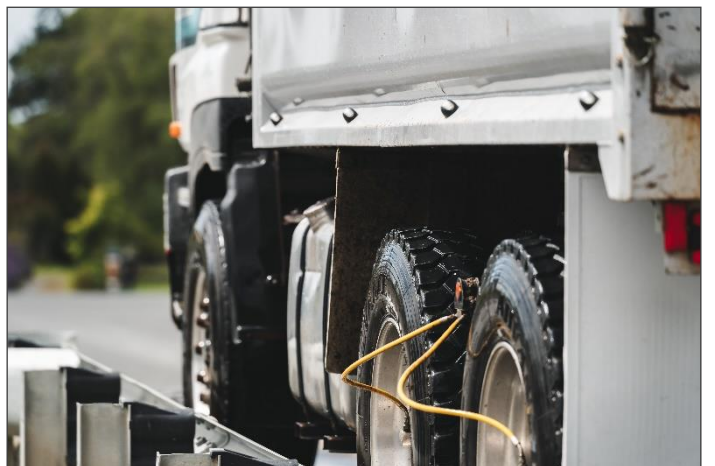
- Automated control of washing cycles allows programs of varying lengths to be selected to suit site conditions
- Manual/auto switch allows for continuous running

Grate Flooring:

- Heavy duty replaceable floor grate flooring allows easy access to collection tray under wash unit
- Large gaps ensure no plugging with washed solids

Water Re-Circulation System

- Specifically designed to complement the main Warrior Wheel and Underbody Truck Wash System
- Waste water is collected beneath the grid work and is returned (via submersible pump) to a system of wired interconnected water tanks
- Small infusion pump adds flocculant to the dirty water, ensuring the precipitation of waste solids in the tanks
- Clean water is returned to the main water tank for subsequent re-use
- Accumulated waste solids are regularly removed from each of the weir tanks via single layer sluice valves, either into a skip or into an alternative collection area





Site Requirements

- A 50mm mains water supply or equivalent
- For standard 15kw DOL unit - A 30amp, 415 volt, 3 phase, 50hz electricity supply, complete with neutral. Note: Minimum recommended generator size is 75kVA
- Suitable foundations - Rocktec will advise on the correct construction specifications for each site and supply layout drawings if required.
- Craneage (4000kg) lift on the day of delivery/installation.
- Plumbing from pump to wheel wash (pipe size dependant on distance).
- Plumbing from wheel wash to water discharge area.



Rocktec
48 Mangawhero Road | Matamata | 3400 | New Zealand
Phone +64 7 881 9188
Email sales@rocktec.co.nz | Website www.wheelwash.co.nz